

**X3 COMFORT INDEX v5.0**

**PRODUCT DESCRIPTION**

Designed for sales people in a busy mattress retail environment, **X3 COMFORT INDEX v5.0** provides pressure imaging functionality for multiple mattresses as well as powerful comparison features to ensure the best customer mattress choice.

**FEATURES**

<b>Dynamic Preview Mode</b>	View live, dynamic data before recording to ensure you are capturing relevant information
<b>Capture Static Pressure Images</b>	Capture a full-color set of static pressure-distribution data
<b>Comfort Index Calculator</b>	Use pressure imaging data and sleeping-position preference to calculate a quantitative comparison of mattress comfort
<b>2-Person Comfort Index Calculator</b>	Take two peoples' sleeping preferences and pressure images into account when calculating a Comfort Index score
<b>Mattress Recommendation Chart</b>	Compare the Comfort Index score of multiple mattresses in a graph
<b>Bed Comparison Workflow</b>	An easy to follow process of pressure imaging multiple mattresses to generate comparative Comfort Index scores
<b>Auto Color-Range Sensitivity Scaling</b>	Automatically rescale the color legend for maximum visual impact

**VIEWS**

Each XSENSOR View mode has multiple settings and options to control how you see sensor data

<b>2D</b>	A top view of the sensor showing different pressure levels in different colors defined by the pressure isobar legend, this view can be rotated or flipped to match client positioning
<b>3D</b>	A perspective view of the sensor showing different pressure levels in different colors and height contours, this view can be rotated in any direction to maximize visual clarity
<b>Frame Compare</b>	Show up to six snapshots of a pressure imaging session side by side for easy comparison

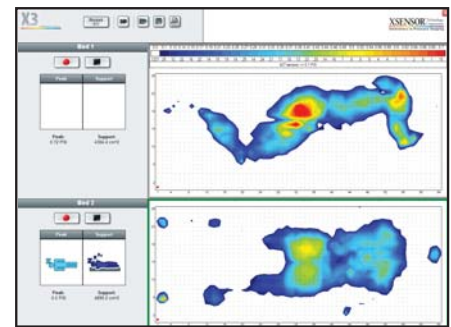
**ANALYSIS AND STATISTICS**

Dynamic statistical analysis of the pressure readings within a user-defined group or the entire sensor pad

<b>Peak Pressure</b>	Track the highest pressure on one or more cell of a given frame of pressure imaging data
<b>Support Area</b>	Calculate the area of the mattress supporting a person
<b>Magnifier Window</b>	Movable and resizable zoom window allows closer examination of your data

**OTHER FEATURES**

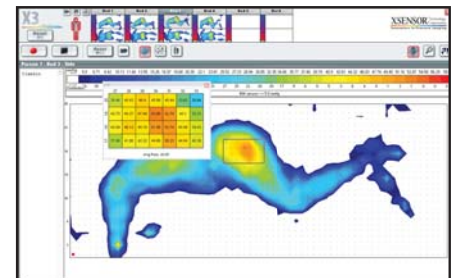
<b>Screen Capture</b>	Use the screen capture feature to save and/or send pressure images to others
<b>Automatic Calibration File Detection</b>	Calibration files are stored on the sensor pad and automatically detected by the software
<b>Quick Mode</b>	A fast, simple, and easy to use mattress evaluation mode for retailers to compare two mattresses for customers when experiencing increased store traffic.



**FEATURES: Quick Mode**



**FEATURES: Mattress Recommendation Chart**



**ANALYSIS AND STATISTICS: Magnifier Window**